



Bathing establishment Fact Sheet

Bathhouse name	FLORA
Address	VIA LUNGOMARE DI LEVANTE, 74
City	MARINA DI MASSA (MS)
Contacts	+39 0585 24 5277
Website	https://www.facebook.com/ristorantebagnoflora/?locale=it_IT

TESTED BY: [Handy Social Promotion Association Surpassable](#) in summer 2023

Please note The following information refers to the verification date shown at the bottom of each card. **The Association** is not responsible for any significant changes made by the property after the visit.

Summary

Bathing establishment Fact Sheet	1
Arrival at the facility	2
Private/public parking.....	2
Pathway from the parking lot to the main entrance	2
Reception.....	3
Bar/restaurant	4
Internal Pathways and common services.....	5
Internal Pathways	5
Toilet and shower accessible to guests with reduced mobility	5
Changing room	7
Beach.....	8
Children's play area	9
Swimming pool	9
Doctors' Offices/Healthcare Facilities	9


Project carried out with the contribution of the





Arrival at the facility

Private/public parking


Presence of private parking	NO
Type of private car park	Not present
Presence of parking space reserved for people with disabilities	NO
Public parking nearby	YES with n. 1/2 places reserved for the disabled at approx. 50/100 meters
Type of public car park	asphalt
	Public parking reserved for people with disabilities

Pathway from the parking lot to the main entrance

Pathway from the car park to the entrance	By means of connecting ramps from the road surface to the pavement. The entrance is accessible with slight differences in height < 8%
There are markers and tactile maps	NO





Usable door/entrance width	more than 90 cm
	Factory Entrance

Reception

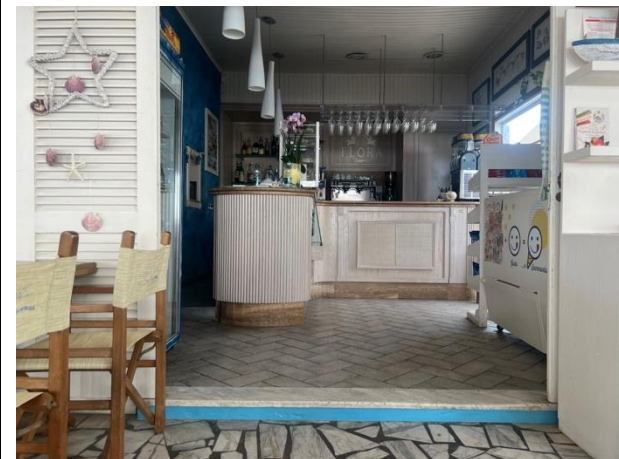
Umbrella booking system	<input type="checkbox"/> Via web <input checked="" type="checkbox"/> By phone <input checked="" type="checkbox"/> On-site
Presence of multilingual staff	YES
Presence of plant plan with key to services available	NO
Presence of visuo-tactile map	NO
Bulletin board/information panels at an average height of 130 cm in a well-lit area and font size at least 14 dpi with a contrast ratio greater than 4.5:1	NO
The staff attended training courses on welcoming people with different disabilities	NO





Bar/restaurant

Type of venue	Bar/restaurant
Access to the premises	by means of a ramp 150 cm long, width > 90 cm, slope 10%. To reach the bar counter you have to overcome a step but the staff is available to help the person with disabilities
Usable door/entrance width	more than 90 cm
Bar counter	more than 100 cm
Types of tables	Two types, with central support and legged
Space underneath the tables from the floor	65 and 62 cm
Multilingual menu	YES
Menus with large print fonts	NO
Braille menu	NO
Table service for people with disabilities	YES
Availability of gluten-free food	<input type="checkbox"/> bread <input checked="" type="checkbox"/> pasta <input type="checkbox"/> biscuits <input checked="" type="checkbox"/> ice cream <input type="checkbox"/> Pre-packaged foods





	<p>Veranda with tables</p>
--	----------------------------

Internal Pathways and common services

Internal Pathways

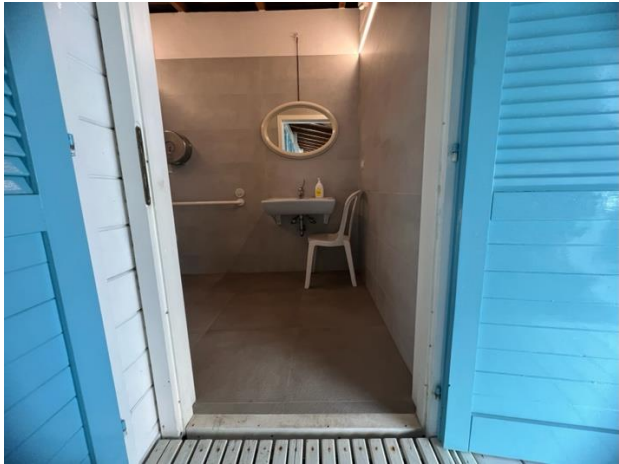
<p>Indicate whether the pathways connecting the entrance to the beach are flat or with ramps in addition to those already described</p>	<p>Obstacle-free paths</p>
---	----------------------------

Toilet and shower accessible to guests with reduced mobility

<p>Number of toilets accessible/usable by guests with reduced mobility</p>	<p>1</p>
<p>Access to the premises</p>	<p>It can be reached on flat ground from the bar and the beach via a ramp, length 71 cm, width 90 cm, slope 17%</p>
<p>Usable width of the entrance door</p>	<p>95 cm</p>
<p>Toilet height</p>	<p>52 cm</p>





Open front toilet seat	YES
Support handles	on both sides
Flexible hand shower at the side of the toilet	YES
Free space on the sides of the toilet	left 25 cm right more than 90 cm frontal more than 90 cm
Electric doorbell/phone	YES
Washbasin with space underneath for wheelchair	69 cm
Height from the ground on the bottom edge of the mirror	Suitable for wheelchair users
Baby changing table	NO
	
Accessible shower available for guests with reduced mobility	YES in common with the toilet room
Shower type	open-type
Floor-level shower	YES
Shower chair	plastic with armrests
Grab bar	missing
Presence of shower head or ups and downs	fixed shower head
Electric doorbell/phone	YES





Changing room

Accessible changing room available for guests with reduced mobility	YES
Access to the premises	Accessible from the flat beach. From the bar through a ramp 71 cm long, 90 cm wide, 17% slope. The door step measures 13 cm in height and can be overcome with a removable ramp.
Usable door/entrance width	90 cm
Size of the dressing room	width 133 cm and depth 130 cm
Presence of a cot	NO
Coat rack height from the ground	Coat rack missing presence of shelves





Beach

Type of beach	sand
Access to the beach	Flat
Walkway to reach the umbrellas	YES
Type of walkway	wood
Walkway width	90 cm





Removable Platform between the walkway and the umbrella station to facilitate the passage and parking wheelchair	YES
Amphibious beach chair available for helping people with reduced mobility to enjoy swimming (owned by the establishment or by association)	YES

Children's play area

Children's play area	missing
----------------------	---------

Swimming pool

The property has a swimming pool	NO
----------------------------------	----

Doctors' Offices/Healthcare Facilities

Hospitals near the facility	NOA NUOVO OSPEDALE APUANE Via Enrico Mattei, 2, 54100 Marina di Massa MS tel.: +39 0585 4931
Other Healthcare Facilities	Località Partaccia via delle Pinete 197/b Marina di Massa Tel.: +39 335 8001617

TESTED BY: **Handy Superabile Social Promotion Association in summer 2023**

